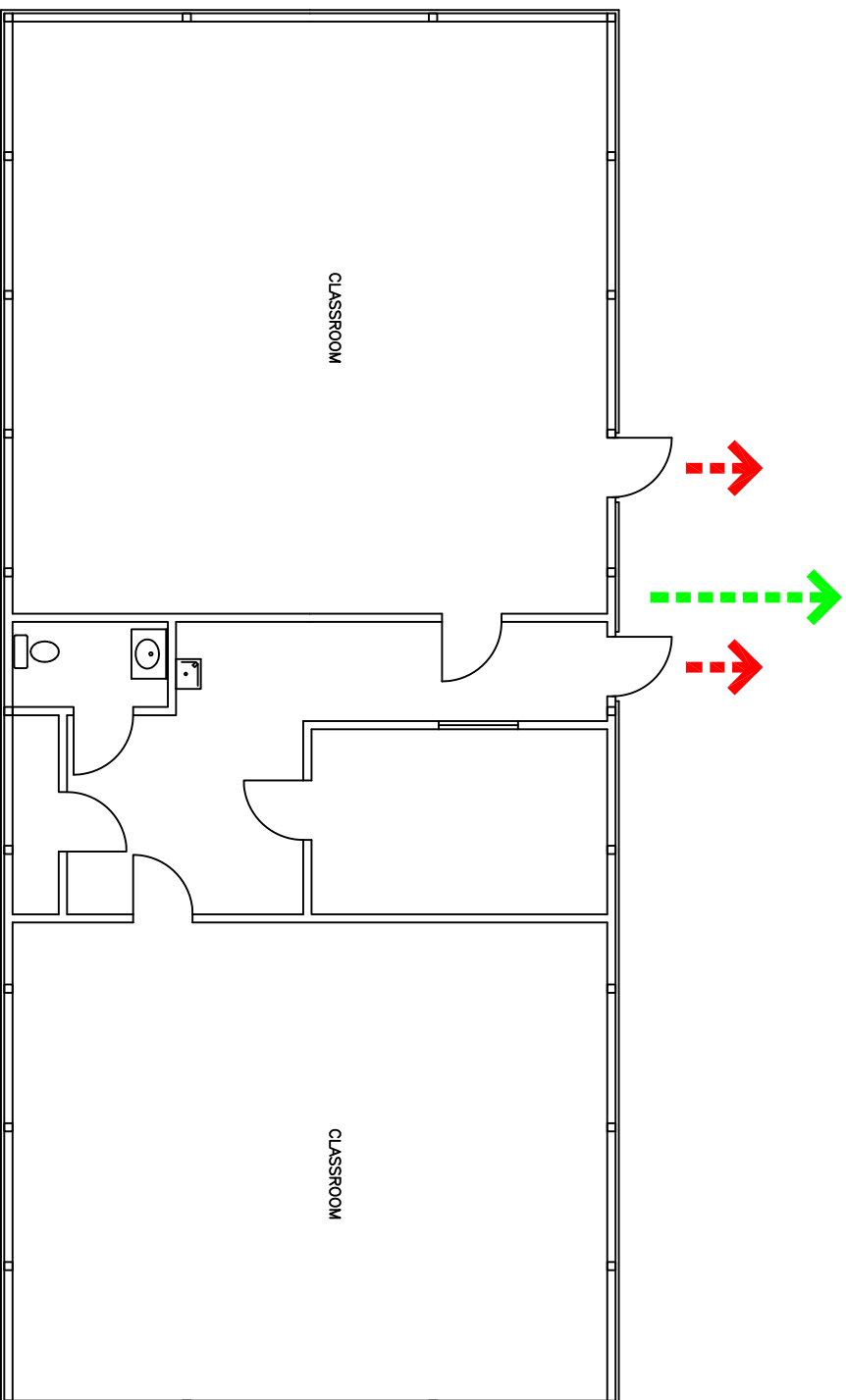


IN CASE OF FIRE

LEAVE BUILDING THROUGH THE NEAREST EXIT AND REMAIN A SAFE DISTANCE AWAY UNTIL ALL IS CLEAR

IN CASE OF HIGH WIND

LEAVE BUILDING THROUGH THE NEAREST EXIT AND MOVE NORTH INTO THE CLASSROOM OF BLDG. 701 / HIGH VOLTAGE STORAGE



NORTH

BLDG. 700 / HIGH VOLTAGE BUILDING - EVACUATION PLAN

DATE: 4/8/15

FILENAME: 700FEP